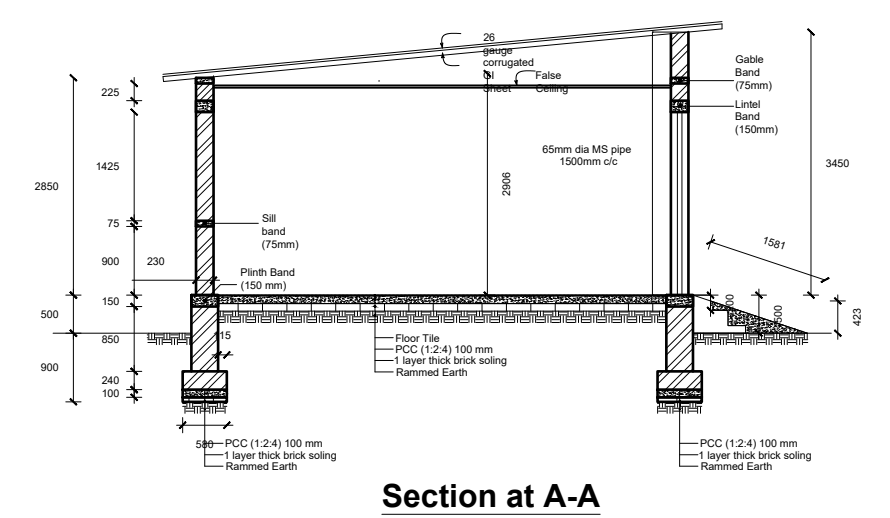
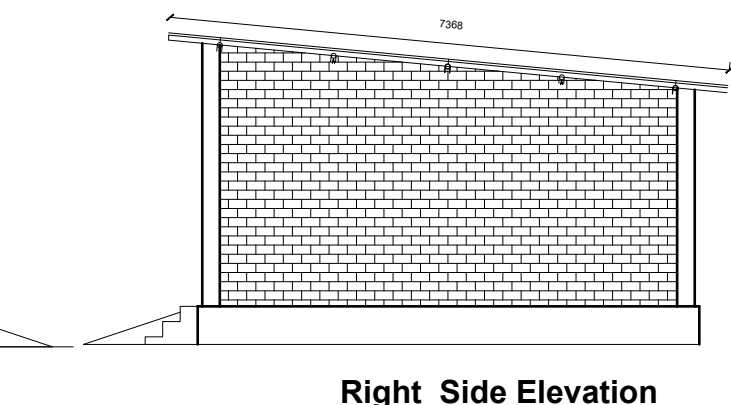
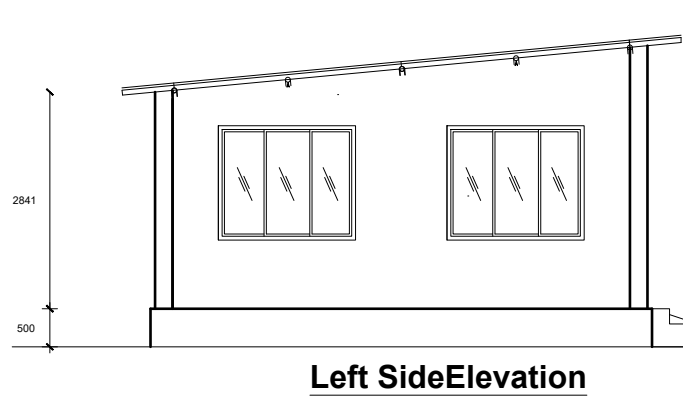
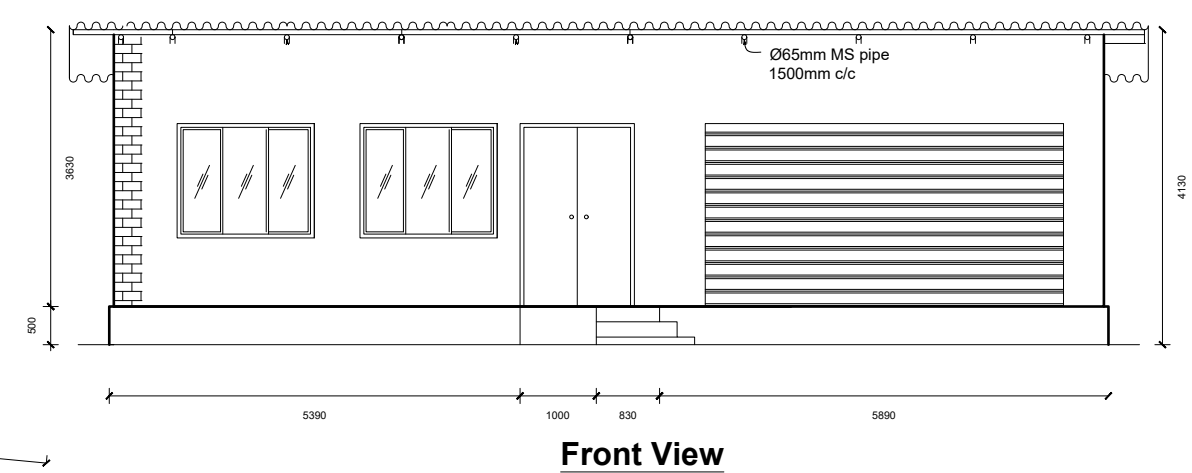
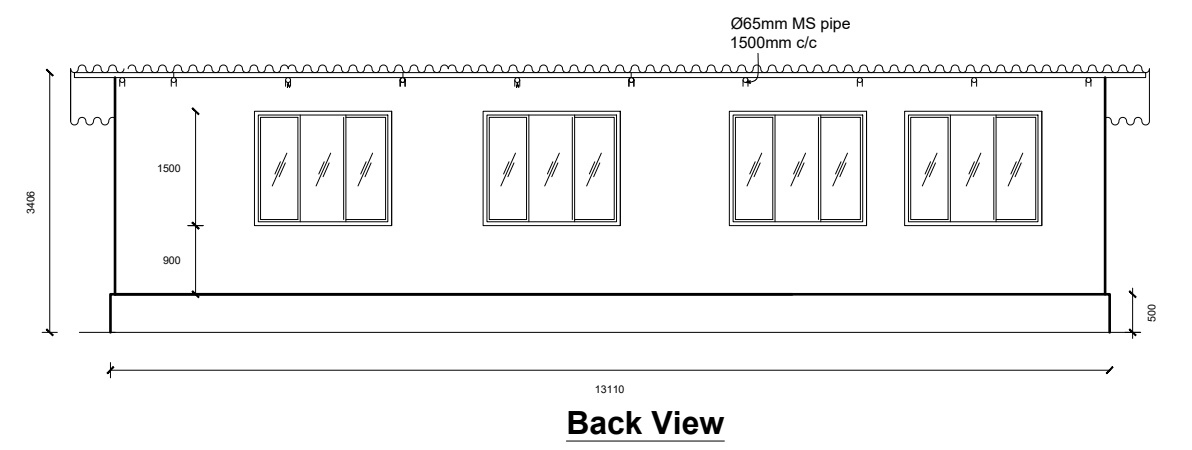
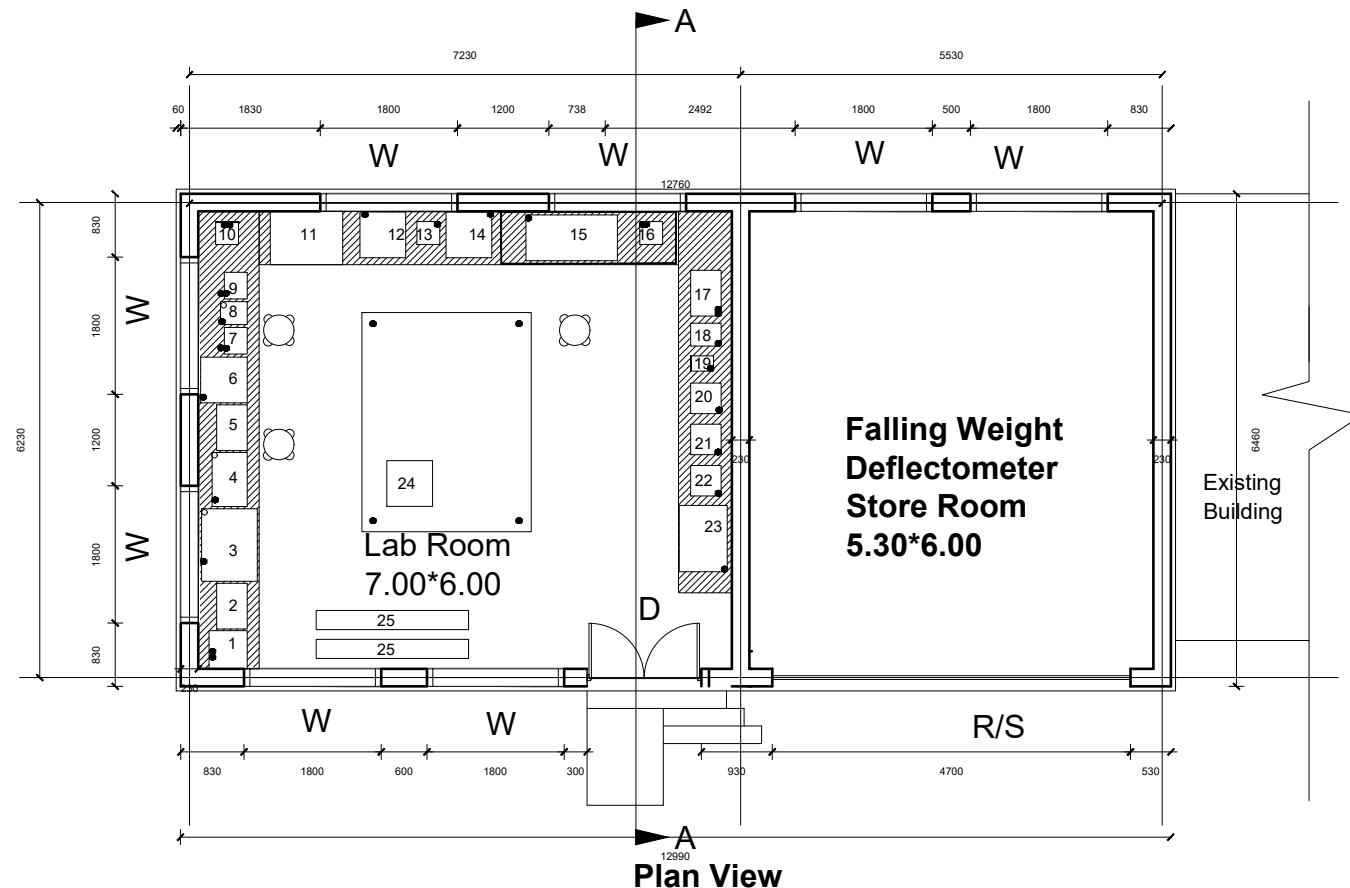


**Construction of Lab Building for Asphalt Laboratory and a Falling Weight Deflectometer
(FWD) Storage (MCA-N/RMP/SH/045)**

CLARIFICATION #1

SN	Questions	Response of Millennium Challenge Account Nepal (MCA-Nepal)
1.	<p>While going through email attachments, site visit and pre bid meeting is already held, however, as we are interested in this project, we would like to know whether we are eligible to participate in the bid or not. If we are eligible, we would like to have Site Visit, hence please provide us date, Contact name and Number of Concerned person for site visit.</p>	<p>Please note that Attendance to Site Visit and Pre-Bid Meeting are neither mandatory nor eligibility criteria. A quotation submitted by a bidder who did not attend the Site Visit and Pre-Bid Meeting is acceptable to MCA-Nepal.</p> <p>(For the administrative and qualification requirements, please refer to Clauses 10 and 11 of the Request for Quotation (RFQ).</p> <p>Regarding the request for site visit: Please note that we have provided minutes of site visit and pre-bid meeting. Minutes of Site visit contains the photographs of the Site. Minutes of the Pre-Bid meeting contains the link of the recording of the pre-bid meeting from which it can be accessed.</p> <p>The site of the works is located at Quality Research and Development Center, Department of Roads, Chakupat, Lalitpur, which is mentioned in instruction number:-4 of RFQ. However, If MCA-Nepal decides to conduct another site visit or Pre-Bid meeting, MCA-Nepal will issue an addendum to the RFQ and will send the corresponding information to the prospective bidders and will also be publish the addendum in MCA-Nepal webpage. (https://mcanp.org/procurement/procurement-notices/)</p>
2.	<p>While going through documents which you have provided in your earlier, we could not locate the drawings, hence, we shall highly appreciate if you could kindly forward drawings for the same at the earliest.</p>	<p>The drawings are in "ANNEX 4: DRAWINGS" in pages number 155 and 156 of the pdf document of the Request for Quotation (RFQ), just after the Technical Specifications. However, please find the drawings included as attachment in this email as well.</p> <p>Among the five (5) Attached documents, Drawing 1 and Drawing 2 are the drawings of the building to be constructed.</p> <p>Other three drawings are the sample drawings of Memorabilia Metal Plaque as per the item number 3.13 of BoQ.</p>

List of Equipments		
NOTATIONS	Name of Equipments	Dimensions (CMXCM)
1	DV2T	50X50
2, 5	ACC.	40X60
3	RTFO	75X73
4	PAV	71X46
6	BBR	61X60
7, 9	PC	35X30
8	DSR	30X35
10	BIT. EXTRACTOR	30X30
11	SINK	95X70
12	WATER BATH	60X60
13	PEN.	30X30
14	SOFTENING POINT	60X60
15	FLASH & FIRE POINT	120X60
16	FLASH POINT	30X30
17	EMULSION EXTRACTOR	60X40
18	BALANCE	30X40
19	HOT PLATE	20X30
20, 21, 22	VISCO.	40X40
23	TFOT	87X63
24	OVEN	60X60
25	DUCTILOMETER	200X25



Schedule of Opening			
SN	Symbol	Name	Dimensions(mm)
1	D	UPVC 2-panel Door	1500x2400
2	W	Upvc Window	1800x1500
3	R/S	Shutter	4700x2400

INDEX	
SYMBOL	Name
	STOOL
	ELECTRIC POINT
	AIR COMPRESSOR REQUIRED
	FLOOR BASED
	LAB BENCHES GRANITE WITH CUPBOARDS UNDERNEATH AT WINDOWSILL LEVEL
	GRANITE LAB TABLE



Government of Nepal
 Ministry of Finance
 Millennium Challenge Account Nepal
 Development Board

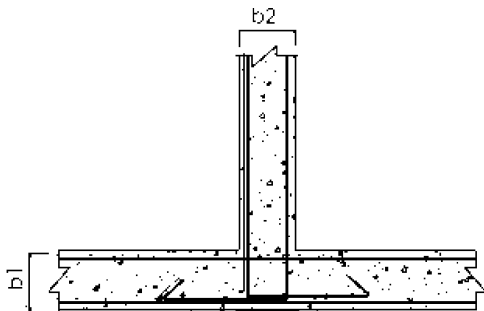
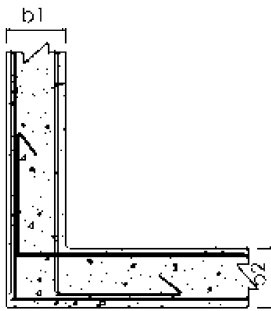
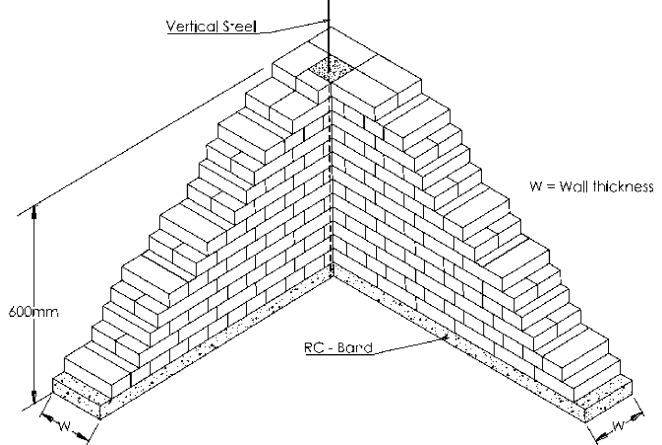
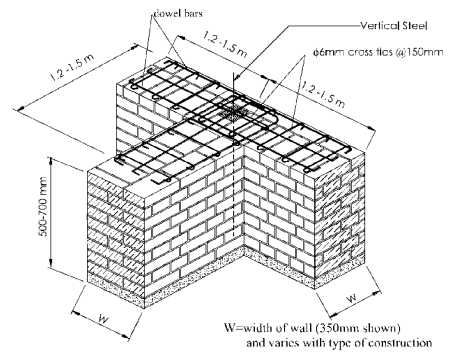
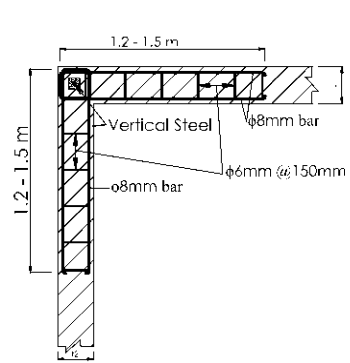
General Arrangement of Superpave Bitumen and FWD Storage Lab

Scale 1:100

SHEET NO.

1

All dimensions are in Millimeters unless specified



Details of Reinforcement						
SN	Description	Bar diameter (mm)	No of bars	Length of each bar (m)	Unit Weight (kg/m)	Total Weight (kg)
1	Vertical	12	6	4.69	0.89	25
2	Plinth Band	12	4	44	0.89	155
3	Sill Band	12	2	38	0.89	67
4	Lintel Band	12	4	39	0.89	139
5	Gable Band	12	2	44	0.89	78
6	Link/ Cross ties	8	24	0.30	0.40	3
7	Stirrup (for lintel & plinth band)	8	24	0.40	0.40	4
8	Dowel Bars at junctions	8	127	1.75	0.40	89
TOTAL						559



Government of Nepal
Ministry of Finance
Millennium Challenge Account Nepal
Development Board

REINFORCEMENT DETAILS

SHEET
 NO.
2

All dimensions are in Millimeters unless specified



ASPHALT MIX DESIGN LAB
WAS CONSTRUCTED WITH THE
FUNDING FROM THE
AMERICAN PEOPLE
THROUGH
MILLENNIUM CHALLENGE CORPORATION
BY
MILLENNIUM CHALLENGE ACCOUNT NEPAL
DEVELOPMENT BOARD

अस्फाल्ट मिक्स डिजाइन प्रयोगशाला
मिलेनियम च्यालेञ्ज कर्पोरेशनमार्फत
अमेरिकी जनताको
आर्थिक सहयोगबाट
मिलेनियम च्यालेञ्ज एकाउण्ट नेपाल विकास समितिद्वारा
निर्माण गरिएको हो ।

DD MM 2021

२०७८ MM DD



**FALLING WEIGHT
DEFLECTOMETER STORAGE ROOM
WAS CONSTRUCTED WITH THE
FUNDING FROM THE
AMERICAN PEOPLE
THROUGH
MILLENNIUM CHALLENGE CORPORATION
BY
MILLENNIUM CHALLENGE ACCOUNT NEPAL
DEVELOPMENT BOARD**

**फलिङ्ग वेट डिफ्लेक्टोमिटर भण्डार कक्ष
मिलेनियम च्यालेञ्ज कर्पोरेशनमार्फत
अमेरिकी जनताको
आर्थिक सहयोगबाट
मिलेनियम च्यालेञ्ज एकाउण्ट नेपाल विकास समितिद्वारा
निर्माण गरिएको हो ।**

DD MM 2021

२०७८ MM DD



SUPERPAVE BITUMEN LAB
WAS CONSTRUCTED WITH THE
FUNDING FROM THE
AMERICAN PEOPLE
THROUGH
MILLENNIUM CHALLENGE CORPORATION
BY
MILLENNIUM CHALLENGE ACCOUNT NEPAL
DEVELOPMENT BOARD

सुपरपेभ विटुमिन प्रयोगशाला
मिलेनियम च्यालेञ्ज कर्पोरेशनमार्फत
अमेरिकी जनताको
आर्थिक सहयोगबाट
मिलेनियम च्यालेञ्ज एकाउण्ट नेपाल विकास समितिद्वारा
निर्माण गरिएको हो ।

DD MM 2021

२०७८ MM DD